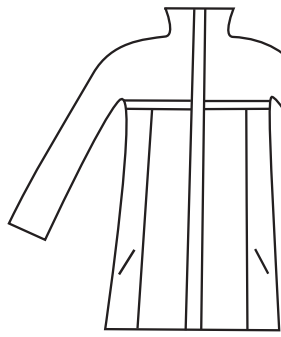
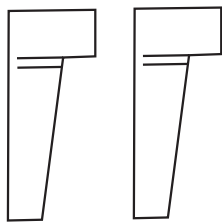


SUSE'S KINDER DELUXE INSTRUCTIONS

Jacket with Fleece from FRONT



Zippers for hip carrying



Chest panels. One with fleece and one for rain or windbreaker without fleece.

Snaps for extra hood

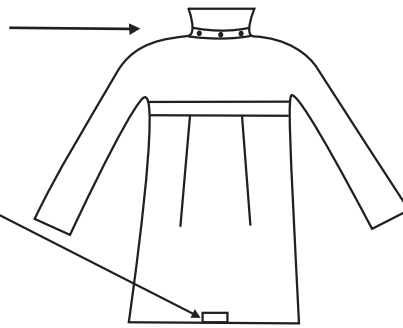
Reflectors for your safety

Two inserts of each, fleece and shell for each side of your hip.



Hook and loop tape on bottom of hip inserts. Fits around drawstring on bottom to keep your little one's toes warm.

Jacket from BACK with hidden zippers hiding the extra space for your child when back wearing



Storage bag for all parts not in use at the moment.

Hidden rain hoods in collar

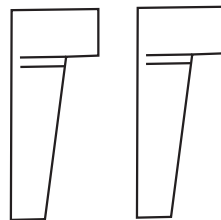
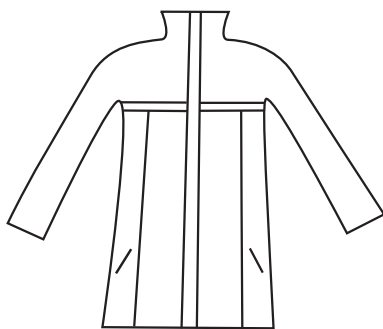


Hoods for babywearer and baby. Can easily be snapped on to the coat. Both have visors to keep rain and snow away from your faces.

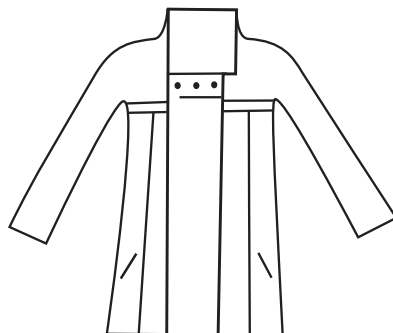


Fleece headrest to support baby's head when worn in the back carry.

SUSE'S KINDER DELUXE TUMMY TO TUMMY WEARING

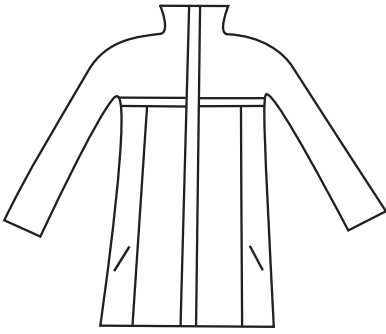


This insert is zipped in correctly.

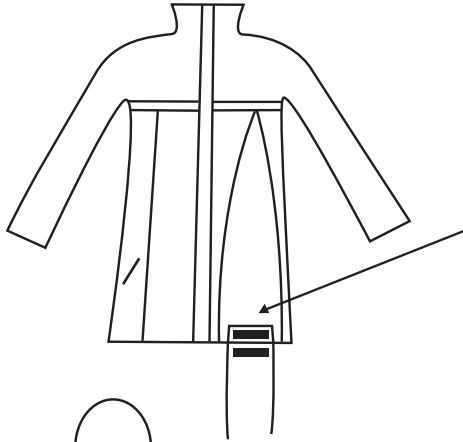
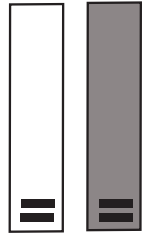


Depending on the weather, choose either the chest insert with fleece or without. Simply zip it in to the front zipper. The top is designed to provide enough air for your child, even when the head is under the front panel. Check your child's airway frequently.

SUSE'S KINDER DELUXE HIP CARRY

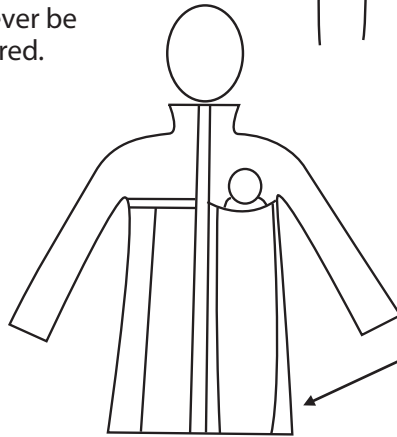
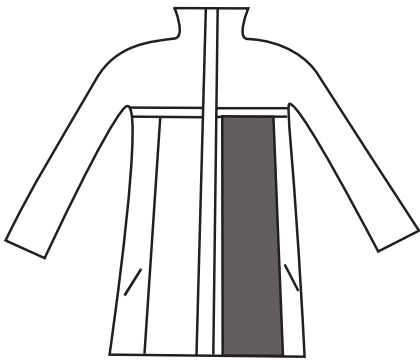


This is what the hip insert looks like when zipped in. A hidden hood for baby is also fastened in a little bag so you'll never be caught in a rain storm unprepared.



Take a fleece hip insert and shell hipinsert and zip it into the unzipped (by the pocket) zipper of your coat. The bottom hook and loop tape is to go around the drawstring on the bottom to keep baby's feet warm.

It is easiest to leave the zipper a bit un-zipped before placing baby into a proper baby carrier under your coat. Once baby is placed, zip it up all the way.

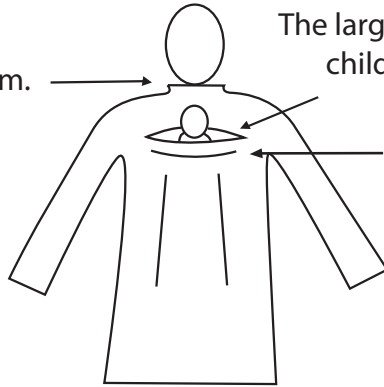


The bottom opening can easily be adjusted with this drawstring in order to keep your body warmth between the two of you.

SUSE'S KINDER DELUXE BABYWEARING

A drawstring will keep your chest warm.

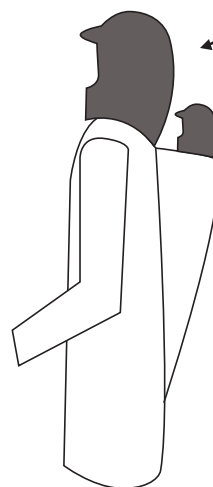
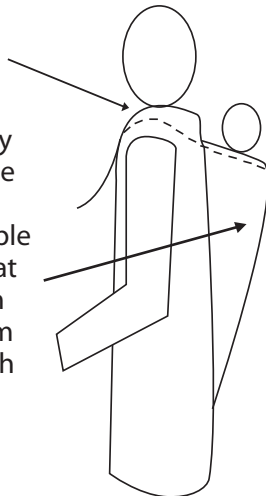
The larger zipper allows for your child's head to come out.



The smaller zipper hides another rain hood for your baby, just in case.

Adjustable drawstring to adjust baby's head opening on your back.

To open the back carry option, simply open the hidden zippers on the fleece insert (and a top separating zipper) and on the shell. Open up the adjustable drawstring from front and flip the coat over your head onto your back. With a little practice you will be able to aim just right to slide baby's head through the child opening in a flash.



Here too the extra hoods can be snapped in. A hidden hood for baby is also available in the back opening.



Baby's headrest can be fastened with hook and loop tape into the shell of your coat for extra head support when needed.